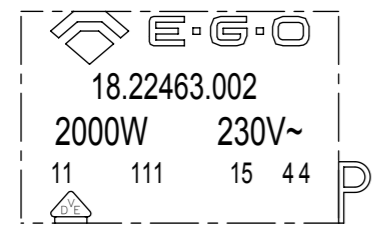


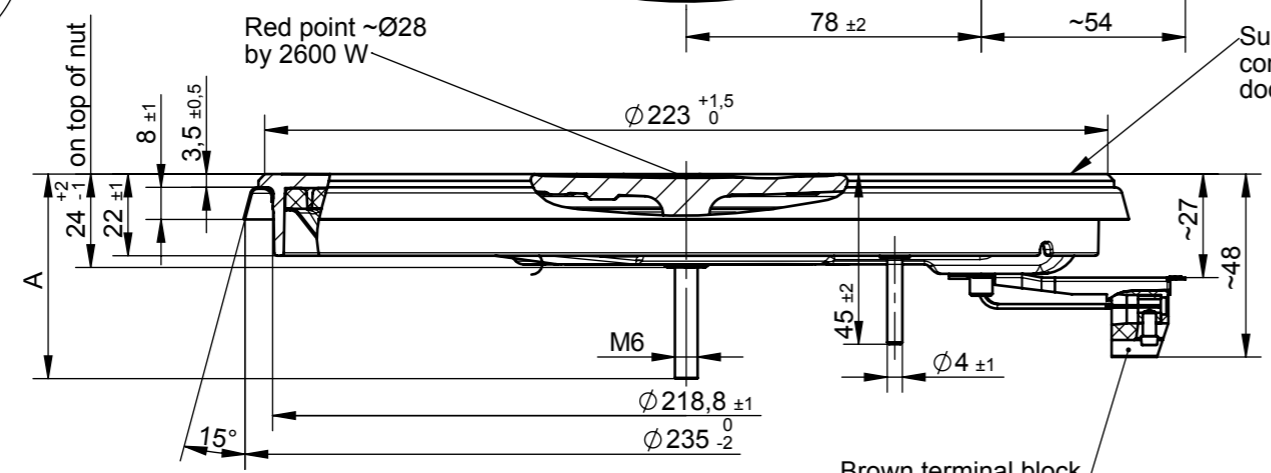
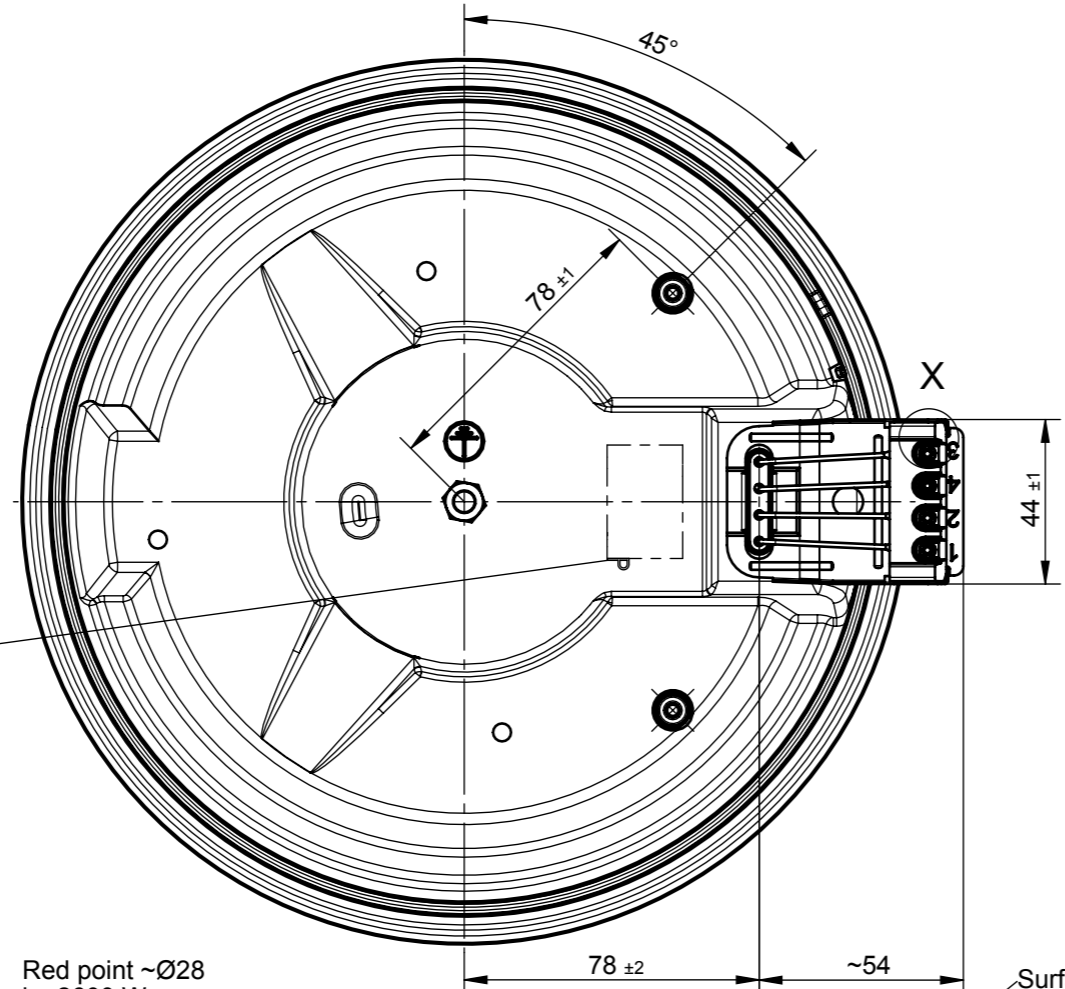
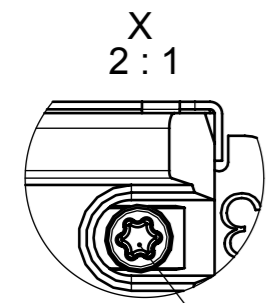
Doc.ID C00004975-006-00-A Doc. status 230 | released
 View date 2016-12-15 Viewed by BENDER
 Art.ID 18.22463.018-00/00A SAP Status 2F



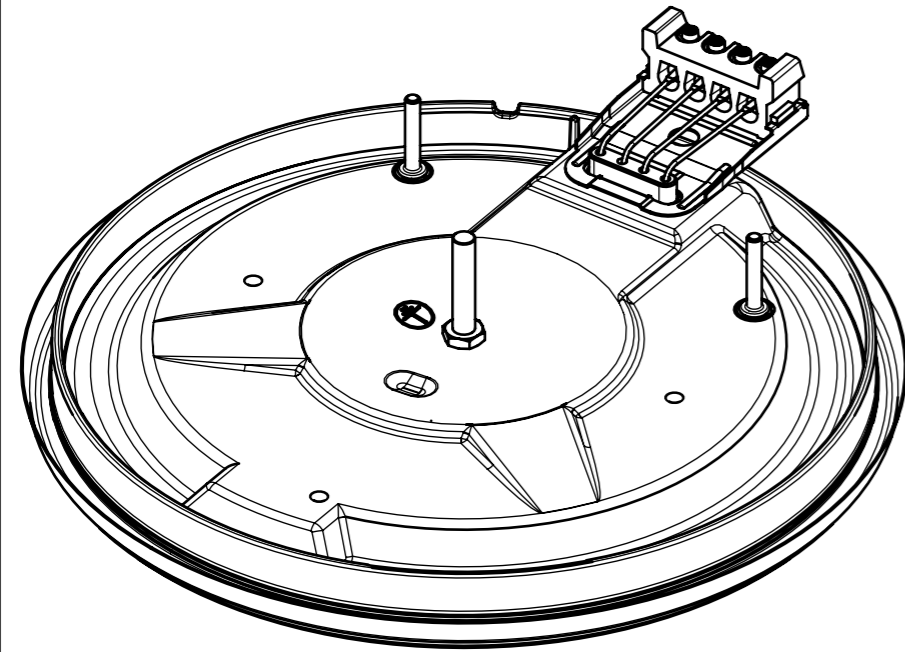
Voltage marking
 230 V without
 240 V blue
 400 V red
 other green

General usage and
 safety information for
 hotplates see
 document 90.60027.135

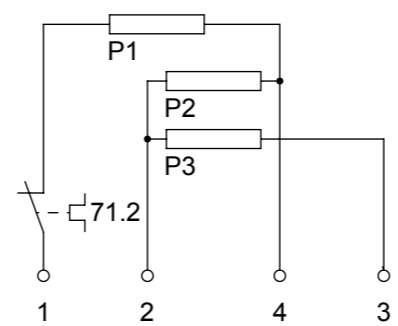
Marking for protector
2000 W



Surface planarity and
concavity according
document 90.60063.751



Wiring diagram



4	18.22463.019	2600	400	850	450	1300	2600	1750	1300	450	340	240	X	X		53±3
3	18.22463.018	2600	230	850	450	1300	2600	1750	1300	450	340	240	X	X		53±3
2	18.22463.014	2600	440	850	450	1300	2600	1750	1300	450	340	240	X			53±3
1	18.22463.002	2000	230	685	365	950	2000	1320	950	380	270	200	X	X		53±3

W	V	P1	P2	P3	6	5	4	3	2	1	ECO	△E	△E	△E	"A" in mm
Pos	Type	Power	Voltage	Rated power			Switch positions					Appro.			

This document is exclusively committed to you for the agreed purpose. Any kind of duplication, utilization or communication of its content is prohibited, if not expressly conceded otherwise. Violators are committed to pay compensations. Any claims of existing or future property rights remain unaffected.			Blank No.		EN Mat.No.		Scale Unit	
			Material				mm	
			Surface Texture ISO 1302				Scale	
			General Tolerances ISO 2768-cK				1:2	
			CAD	Date	Name		Designation	
			2016-05-19	MAKUCJ		EGO Hotplate 220		
Cha.	Information No.	Date	Proc.	2016-08-01	MAKUCJ			
F.Rel.	A01766	2016-08-22	Rel.	2016-08-19	LAPANJAA			

Origin		Repl.for		Repl.by		Ref.	
5		6		7		8	



Drawing No.	Sh.No.	Ver.	Stat.	Sheets	Doc.	Ex.Doc.
C00004975	006	00	F			